

## Modular Preparation 1400 mm Cupboard Base for Sink Top

ITEM # \_\_\_\_\_

MODEL # \_\_\_\_\_

NAME # \_\_\_\_\_

SIS # \_\_\_\_\_

AIA # \_\_\_\_\_



121827 (TEL2S14)

 Cupboard Base for Sinks  
 Top, 1400mm

### Short Form Specification

#### Item No.

Constructed entirely in 304 AISI stainless steel. Front and rear longitudinal stainless steel c-channel reinforcement. Easily removable sliding doors with sound deadening internal and external panels have stainless steel bearings on the top and a hidden runner on the bottom. 150mm height-adjustable (0/+90mm) oversized feet (65x65mm) can be removed for masonry installation. 45° degree internal side corner junction system.

### Main Features

- Masonry installation possible by simply removing feet.
- Extremely easy to clean thanks to the smooth edges.

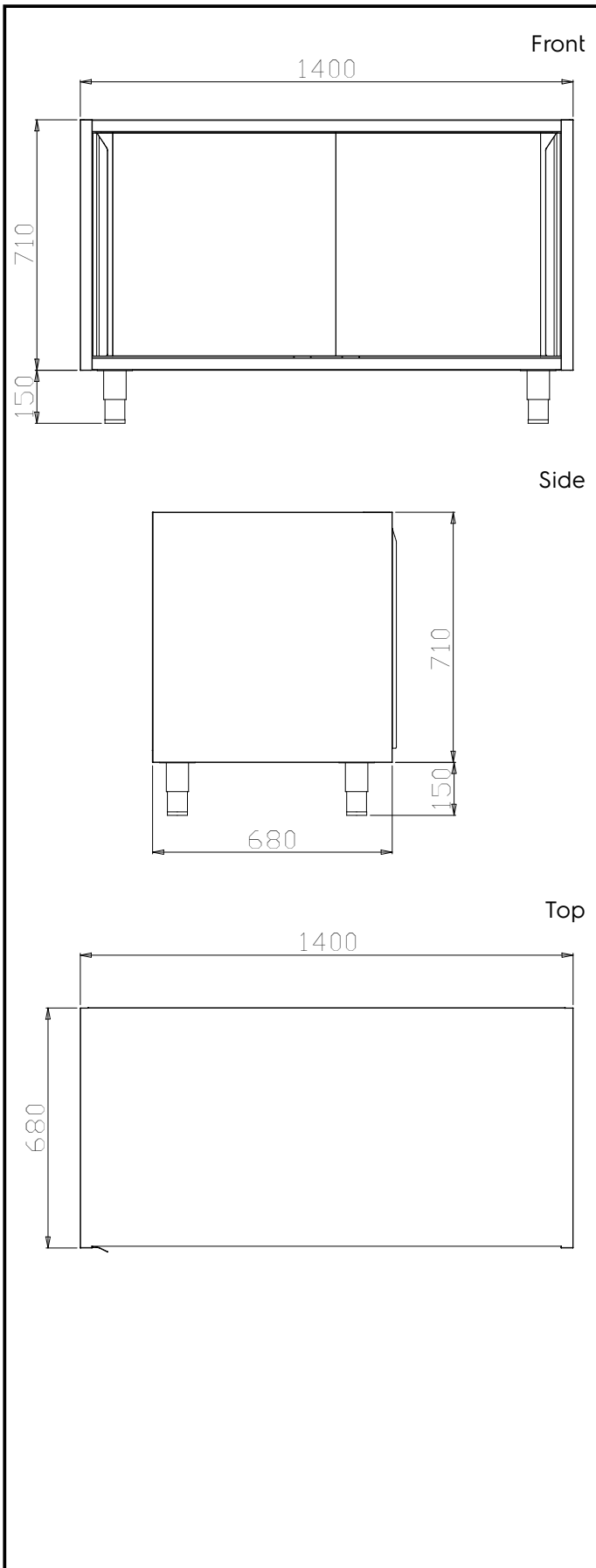
### Construction

- Mounted on 150 mm height adjustable (0/+90 mm) oversized (65x65 mm) feet.
- Front and rear lengthwise stainless steel c-channel reinforcement, 15/10 (16 gauges).
- Internal sides supporting the structure to have 45° degrees internal side corners junction system.
- 30 mm high middle-shelf in AISI 304 stainless steel, height-adjustable in 3 positions, with inner double fold to eliminate gaps between sides and back.
- Sliding doors, with sound deadening internal and external panels, run on the upper part on the s/s bearings and on the lower part on a hidden runner. Doors are easy to remove thus facilitating cleaning procedures.
- Constructed entirely in AISI 304 Stainless Steel with Scotch Brite finish.

### Optional Accessories

- Stainless steel plinth, 1400mm PNC 855830
- Stainless steel plinth, 1500mm PNC 855831
- Stainless steel plinth, 1600mm PNC 855832
- Stainless steel plinth, 1700mm PNC 855833
- Stainless steel plinth, 1800mm PNC 855834
- Stainless steel plinth, 1900mm PNC 855835
- Stainless steel plinth, 2000mm PNC 855836
- Stainless steel plinth for end elements, 700mm depth PNC 855837
- Stainless steel plinth for end elements, central installation, 700mm depth PNC 855838
- Stainless steel plinth, 2400mm PNC 855839

APPROVAL: \_\_\_\_\_



**Key Information:**

|                                     |         |
|-------------------------------------|---------|
| <b>Cabinet width:</b>               |         |
| 121827 (TEL2S14)                    | 1320 mm |
| <b>Cabinet depth:</b>               | 570 mm  |
| <b>Cabinet height:</b>              | 610 mm  |
| <b>N° of doors:</b>                 | 2       |
| <b>Door Type:</b>                   | Sliding |
| <b>External dimensions, Width:</b>  | 1400 mm |
| <b>External dimensions, Depth:</b>  | 680 mm  |
| <b>External dimensions, Height:</b> | 860 mm  |
| <b>Net weight:</b>                  | 44 kg   |